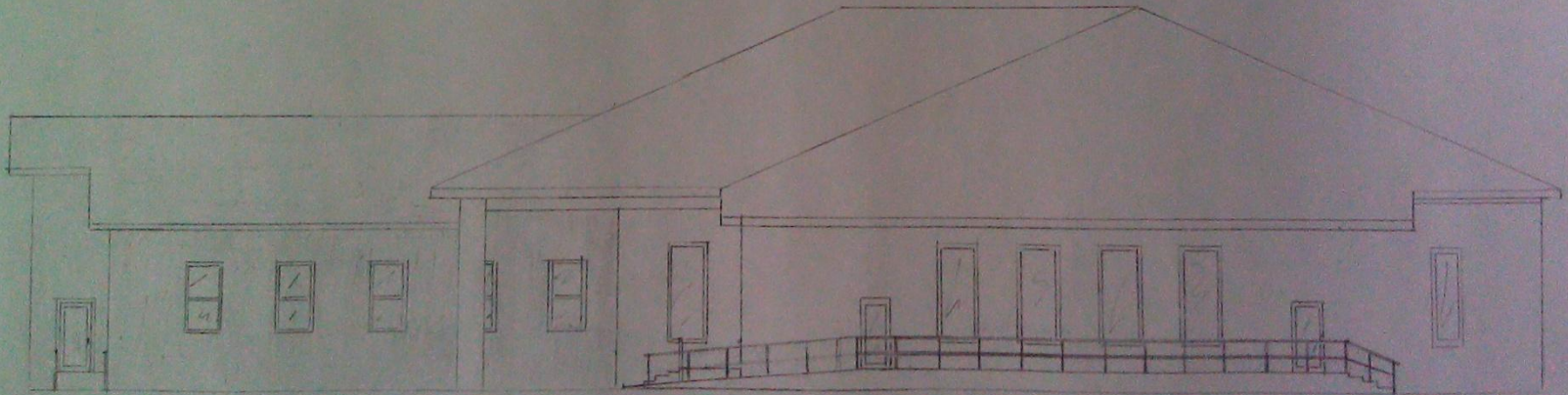


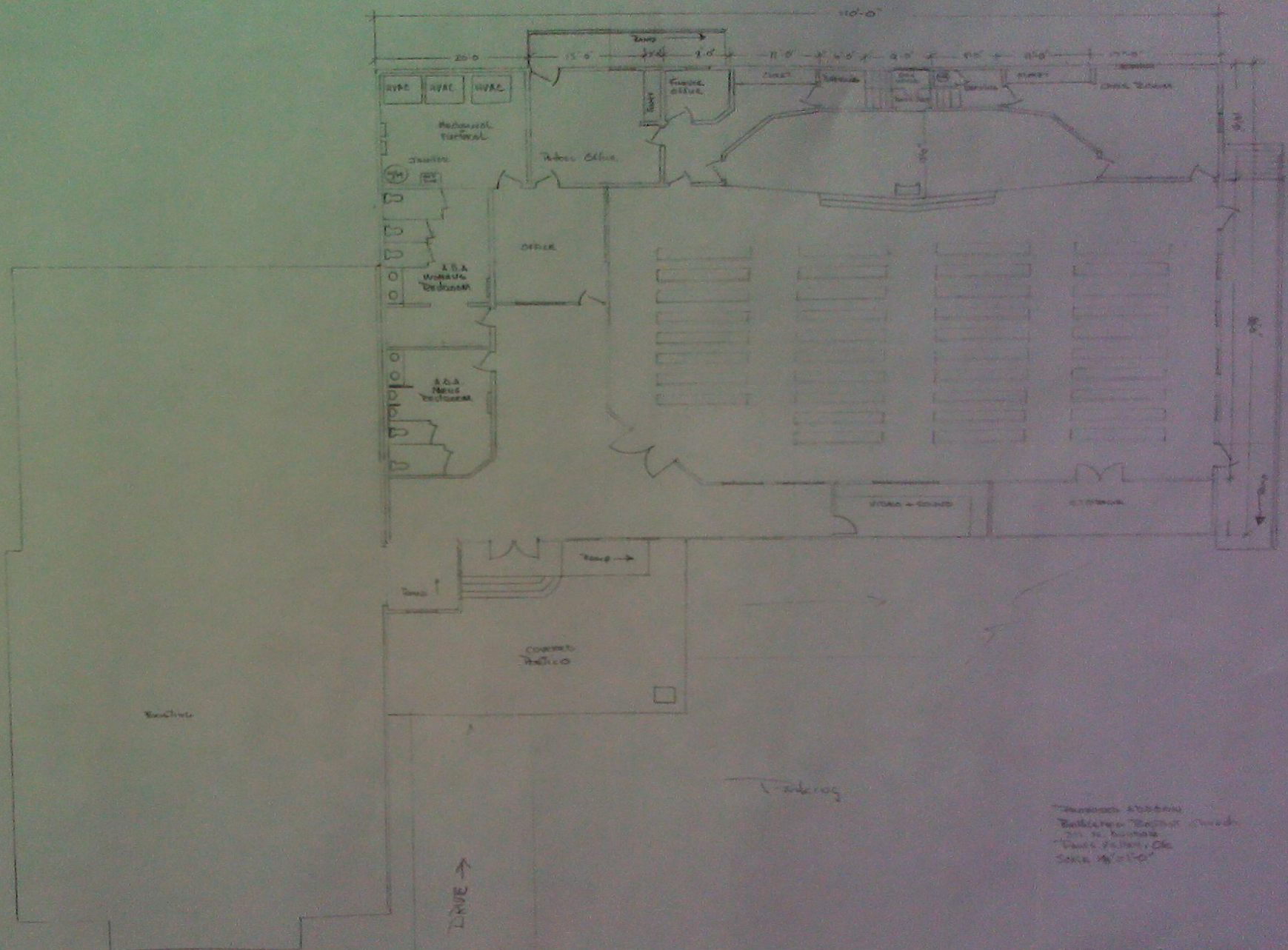


west view



North View

Protestant Addition
Bethlehem Baptist Church
311 N. Denham St
Pottsboro, NC 28075
Scale 1/8" = 1'-0"



20'-0" 15'-0" 10'-0" 8'-0" 7'-0" 6'-0" 5'-0" 4'-0" 3'-0" 2'-0" 1'-0"

OFFICE OFFICE OFFICE

RECEPTION

RECEPTION

OFFICE

A.A. Women's Restroom

A.A. Women's Restroom

OFFICE

OFFICE

OFFICE

OFFICE

OFFICE

OFFICE

OFFICE

OFFICE

OFFICE

OFFICE

OFFICE

OFFICE

OFFICE

OFFICE

OFFICE

OFFICE

OFFICE

OFFICE

LIVE ↑

Parking

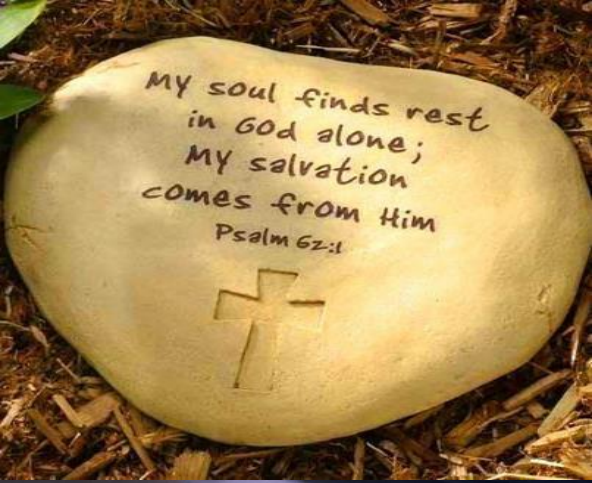
Proposed Addition
Building 20 ft. by 20 ft.
1950-51



Bethlehem

TO KNOW
CHRIST AND TO
MAKE HIM KNOWN

2012



versaday.com

Behold, God is my salvation; I will trust,
and not be afraid: for the LORD JEHOVAH
is my strength and my song...

Isaiah 12:2 (KJV)

THE LORD
IS MY STRENGTH
AND MY MIGHT
AND HE HAS
BECOME
MY SALVATION
THIS IS MY
GOD
AND I WILL
PRAISE
HIM
MY FATHER'S
GOD
AND I WILL
EXALT
HIM

THIS MONTH MAKE HIM KNOWN THROUGH SALVATION

The LORD is the strength of his people, a
fortress of salvation for his anointed one.

Psalm 28:8

The salvation of the righteous comes from the Lord; he is their
stronghold in time of trouble. **PSALM 37:39 NIV**

**THE SALVATION OF
THE RIGHTEOUS**

www.HearGodsWordatBethlehem.com

www.free-wallpaper-photos.com



The salvation of the righteous comes from the Lord; he is their
stronghold in time of trouble. **PSALM 37:39 NIV**

**THE SALVATION OF
THE RIGHTEOUS**

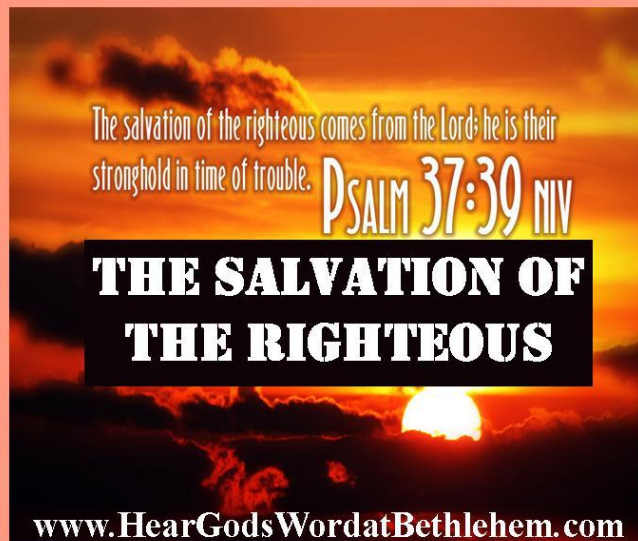
www.HearGodsWordatBethlehem.com

Psalm 37:35-40 NIV

- 35 I have seen a wicked and ruthless man flourishing like a luxuriant native tree, 36 but he soon passed away and was no more; though I looked for him, he could not be found. 7 Consider the blameless, observe the upright; a future awaits those who seek peace.^[d] 38 But all sinners will be destroyed; there will be no future^[e] for the wicked. 39 The salvation of the righteous

Psalm 37:35-40 NIV

- **comes from the LORD; he is their stronghold in time of trouble. ⁴⁰The LORD helps them and delivers them; he delivers them from the wicked and saves them, because they take refuge in him.**



- **The Reprobate v.35-36**
- **The Righteous v.39**
- **The Refuge v.40**

Thesis: The righteous Christians will see the salvation of the Lord.

The Salvation of the Righteous

The Reprobate v.35-36 ³⁵ I have seen a wicked and ruthless man flourishing like a luxuriant native tree, ³⁶ but he soon passed away and was no more; though I looked for him, he could not be found.

“Surely you know how it has been from of old, ever since mankind^[a] was placed on the earth, that the mirth of the wicked is brief, the joy of the godless lasts but a moment.

Job 20:4-5 NIV

The Salvation of the Righteous

The Righteous v.39 ³⁹ The salvation of the righteous comes from the LORD; he is their stronghold in time of trouble.

This is the account of Noah. Noah was a righteous man, blameless among the people of his time, and he walked with God.

Genesis 6:9

The Salvation of the Righteous

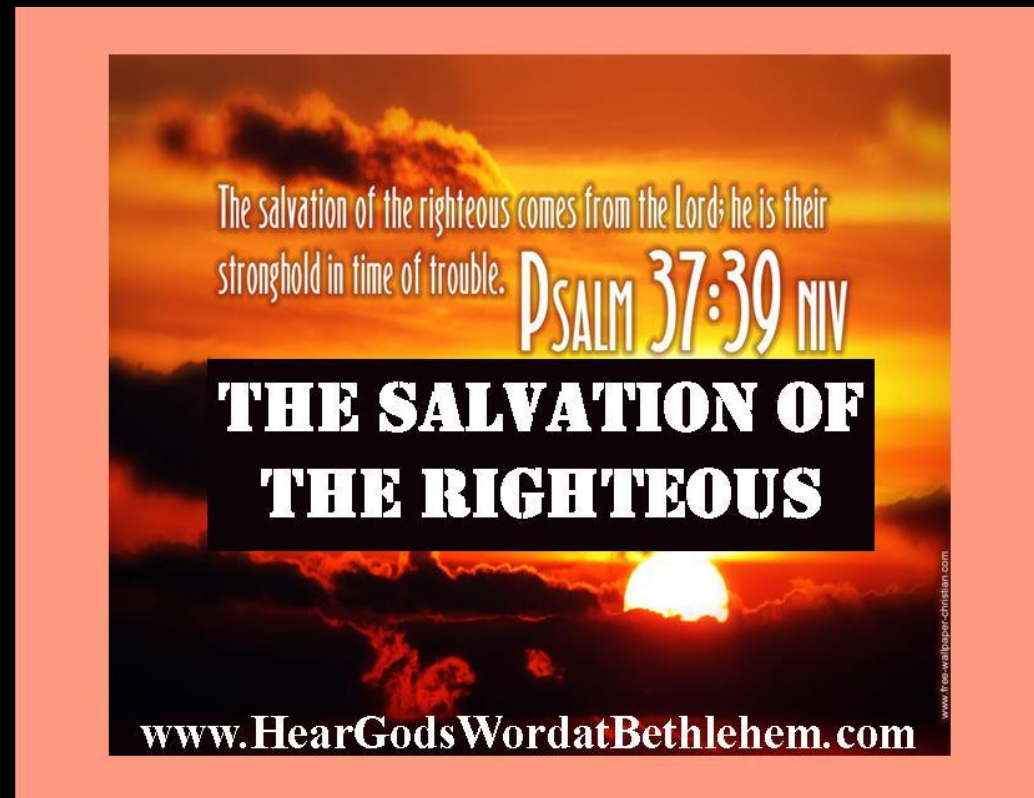
The Refuge v.40 ⁴⁰ The LORD helps them and delivers them; he delivers them from the wicked and saves them, because they take refuge in him.

They were helped in fighting them, and God handed the Hagarites and all their allies over to them, because they cried out to him during the battle. He answered their prayers, because they trusted in him.

1 Chronicles 5:20

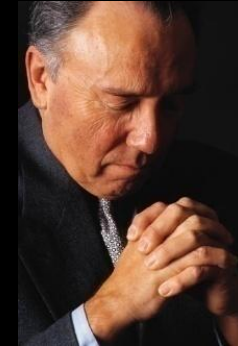
The Salvation of the Righteous

Conclusion:



- **Thesis:** The righteous Christians will see the salvation of the Lord.

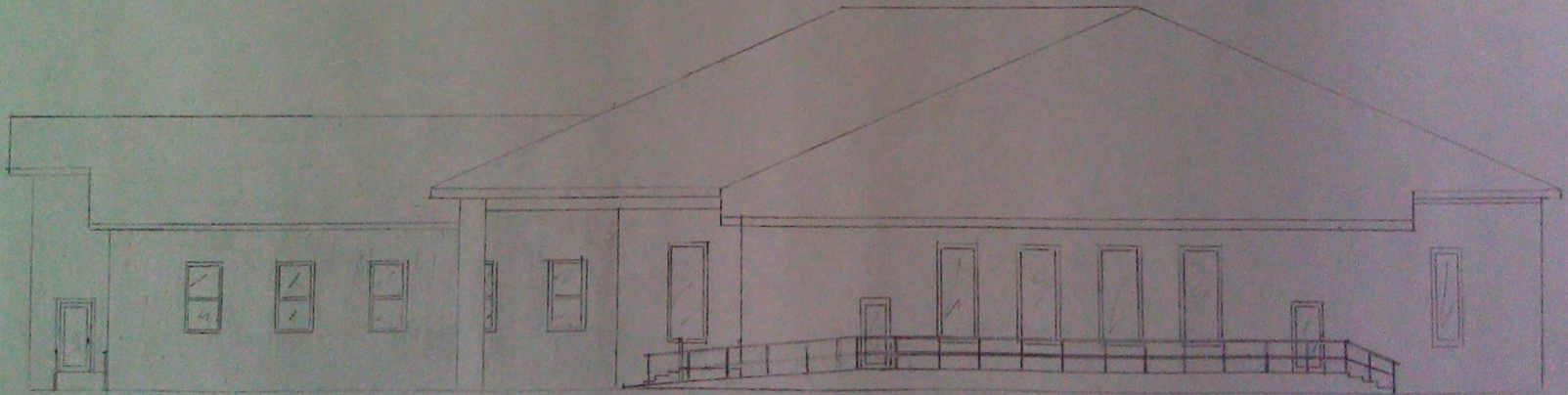
The Salvation of the Righteous



- Decisions to make today!
- Accept Jesus Christ as you Lord and Saviour
- Be baptized
- Join Bethlehem Baptist Church
- Ask for prayer
- Testify
- Ministry or Mission

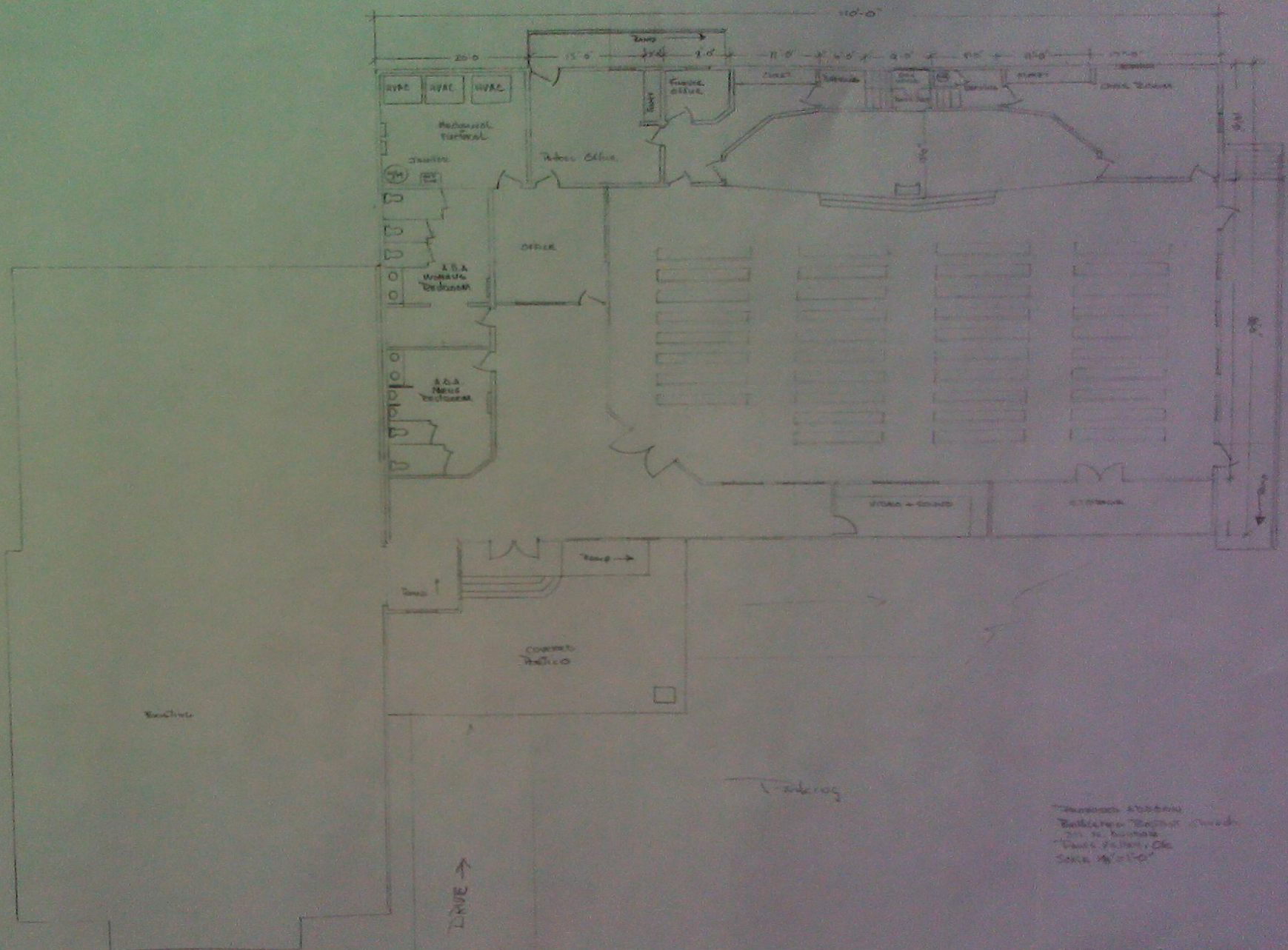


west view



North View

Protestant Addition
Bethlehem Baptist Church
311 N. Denham St
Pottsboro, NC 28075
Scale 1/8" = 1'-0"



"Business Address"
 "Business Address"
 "Business Address"
 "Business Address"
 "Business Address"

↑ LIVE

↑ Parking

A close-up photograph of a stone inscription. The text is carved in a serif font and is enclosed within a decorative, rectangular border with rounded corners. The stone has a rough, textured appearance. The text reads: "TO KNOW CHRIST AND TO MAKE HIM KNOWN". Below the main text, the year "2012" is also carved.

Bethlehem

2012